

Wooden fronts, wide and narrow alu frames

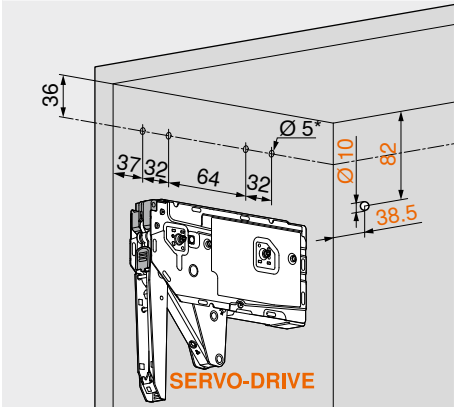


Web code – click on the code or enter it in the Product Configurator

DQHFJY

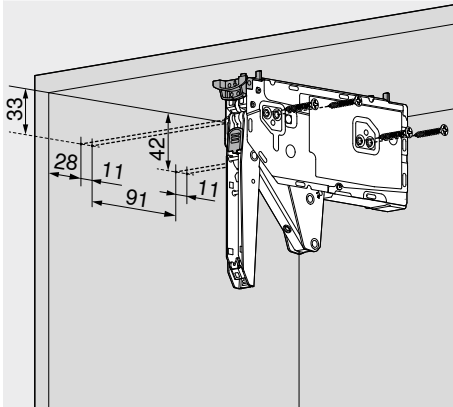
Planning

Drilling position – system screws



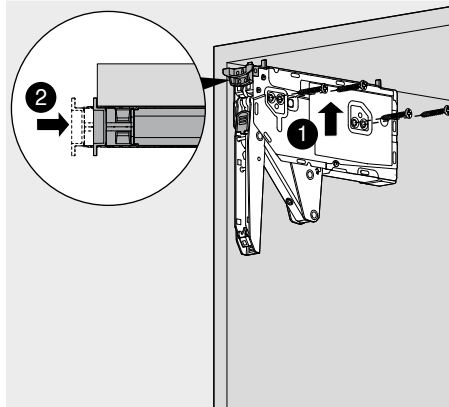
* Drilling depth 11.5 mm

Drilling position – chipboard screws

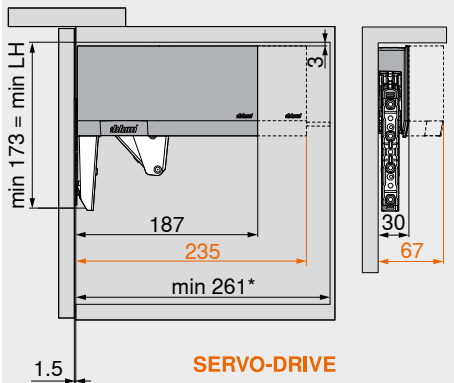


4 x chipboard screws Ø 4 x 35 mm

Positioning system – chipboard screws

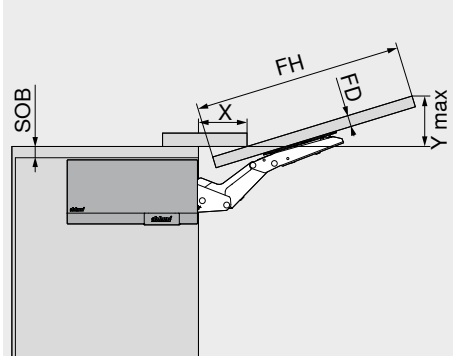


Space requirement



LH Internal cabinet height
* Min. 261 mm with visible wall hanging bracket

Space requirement – cornice | crown

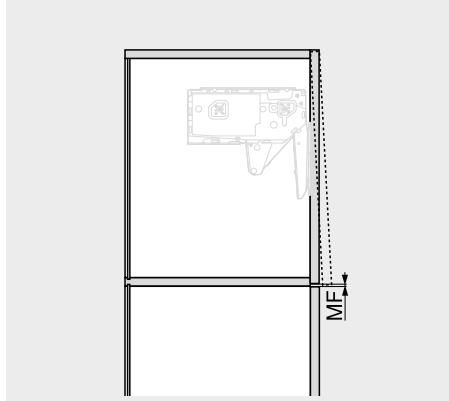


Space requirement (mm)
At max. opening angle
 $Y = FH \times 0.29 + FD - SOB$

FD (mm)	16	19	22	26	28	-
X (mm)	68	57	47	33	27	-

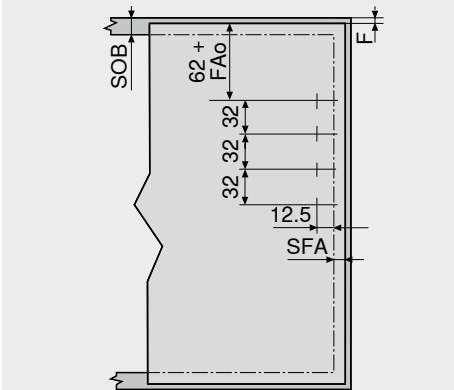
FD Front thickness
FH Front height
SOB Top panel thickness

Minimum gap MF



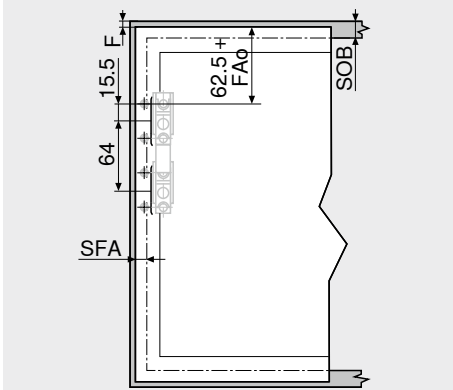
MF Minimum gap
2 mm

Front assembly – wooden fronts and wide alu frames



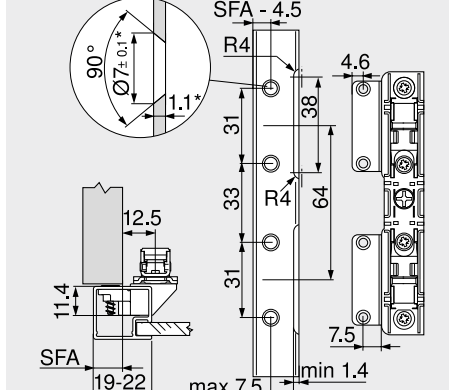
Use 4 chipboard screws (609.1x00) for wooden fronts
Use 4 counter sunk self tapping screws (660.0950) for wide alu frames
F Gap
FAo Upper front overlay
Max. 25.4 mm
SFA Front overlay of the side panel
SOB Top panel thickness

Front assembly – narrow alu frames



F Gap
FAo Upper front overlay
Max. 25.4 mm
SFA Front overlay of the side panel
SOB Top panel thickness

Narrow alu frames



For frame width 19 mm, a side front overlay SFA of 11–18 mm is possible
* When changing material thickness, adjust the assembly dimensions accordingly