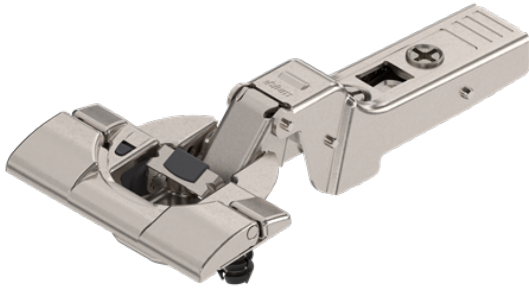


## Blum Clip Top Hinge – 95° Thick Door Half Overlay BLUMOTION Sprung – Nickel – Inserta



Variant code: 71B9690-NI

**Blum CLIP top BLUMOTION 95° Half Overlay Hinge – Nickel** is designed for cabinet doors requiring controlled closing performance in half overlay applications where a reduced opening angle is preferred. Incorporating integrated **BLUMOTION soft-close technology**, the hinge ensures smooth and quiet door movement without the need for additional damping components, delivering refined and consistent operation.

With a **95° opening angle**, the hinge is particularly suited to installations where door thickness or cabinet configuration limits the use of wider opening hinges. Designed for **half overlay cabinet doors**, it allows adjacent doors to share a central cabinet panel, supporting efficient cabinet layouts in multi-door configurations. The hinge clips securely onto compatible Blum CLIP top mounting plates using the tool-free attachment system, enabling efficient installation and straightforward removal during fitting or adjustment.

This hinge is available in both **Screw-on and Inserta boss fixing configurations**, offering flexibility across different installation preferences and production environments. The Screw-on version provides traditional mechanical retention within the hinge cup and requires appropriate drilling preparation. The Inserta version incorporates integrated expansion dowels for rapid installation into pre-drilled hinge cup holes, reducing fitting time while maintaining secure anchoring. Manufactured from steel with a durable **nickel-plated finish**, the hinge offers a neutral appearance suitable for a wide range of cabinetry styles. Three-dimensional adjustment enables precise vertical, lateral and depth positioning to achieve accurate alignment and consistent door gaps.

---

### Product Features

- **95° opening angle** for controlled cabinet access

- Integrated **BLUMOTION soft-close mechanism**
- Designed for **half overlay door applications**
- Available in **Screw-on and Inserta boss fixing options**
- Durable **nickel-plated steel finish**
- Compatible with Blum **CLIP top mounting plates**
- Tool-free clip-on hinge assembly
- Three-dimensional adjustment capability

---

## Product Benefits

- Provides smooth and controlled door closing
- Suitable for installations with limited opening clearance
- Supports efficient cabinet layouts using shared panels
- Offers installation flexibility for different production methods
- Ensures secure hinge retention
- Enables precise alignment and consistent reveals
- Suitable for residential and light commercial interiors

---

## Technical Characteristics

- Requires compatible Blum CLIP top mounting plates
- Screw-on version requires correct hinge cup drilling preparation
- Inserta version uses integrated expansion dowels for rapid installation
- Adjustable vertically, laterally and in depth

- Designed for integration within Blum cabinet systems
- Suitable for thicker or space-restricted door applications
- Correct hinge and mounting plate pairing ensures optimal performance

---

## Applications

This hinge is intended for half overlay cabinet door installations where a reduced opening angle is required, such as cabinets with thicker doors or limited spatial clearance. The integrated **BLUMOTION soft-close mechanism** ensures controlled and quiet closing performance, while the availability of **Screw-on and Inserta fixing options** makes it suitable for both bespoke joinery and volume cabinet production. It is commonly specified in kitchens, bedrooms and fitted furniture in residential and light commercial interiors where durability, precise alignment and consistent hinge operation are required.

| Property                 | Value        |
|--------------------------|--------------|
| Finish                   | Nickel       |
| Opening angle (°)        | 95           |
| Application              | Half Overlay |
| Boss                     | Inserta      |
| Closing Mechanism        | Soft Close   |
| Boss Drilling Depth (mm) | 12.3         |
| Max Door Thickness (mm)  | 32           |
| Hinge Type               | Profile Door |